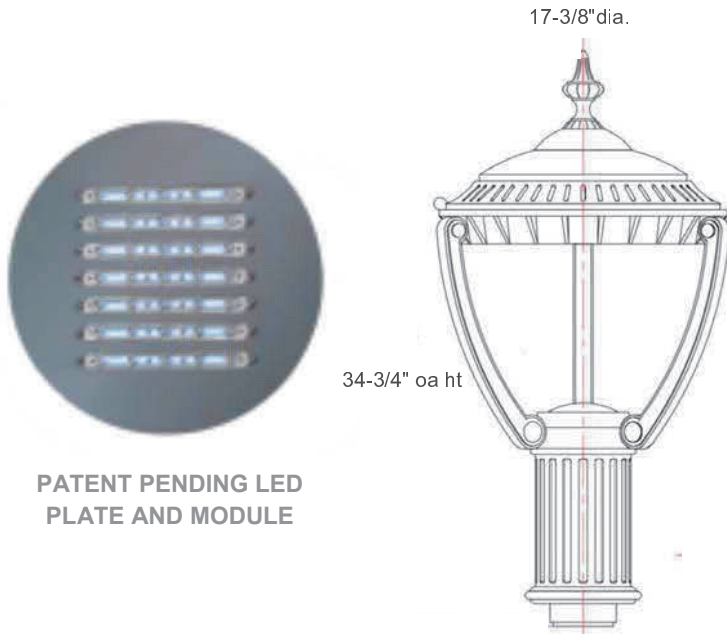


# San Tropez & Normandy LED post top fixtures



San Tropez shown with 3 convex scrolls

## Product Description:

**Fixture Housing -** The Housing is ultra-thick, heavy duty cast aluminum with a cast decorative finial on top.

**Size 10 =** 17-3/8" dia. X 34-3/4" overall height

**Max. Wattage =** 100 watt LED

**Optics:** Type III & V

**LED:** Philips Lumileds chip

**LED Life:** L70 100,000 hours at 25C

**115 lm/W efficacy**

**Patent pending LED module**

**CETL/CUL, ROHS, IP65 rated and DLC listed**

**Electrical Components - UL Listed driver**

**Power Input:** 120V, 277V, 480V optional

**Power Factor:** >90

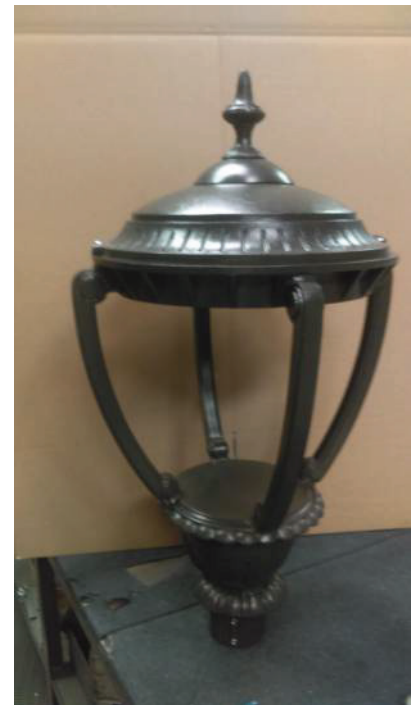
EncapLED, an IP66-rated, DLC and ETL listed LED module, combines optics and heat sink into one configurable unit which gives precise light distribution. It allows us to do 10w, 30w, & 40w. increment adjustment on light output. The module achieves 110-120 lm/w efficacy with LUXEON Lumileds TX chips.

Beside maximizing heat dissipation surface, we also utilize convection-based heat management which creates additional air flow around each chip. Unlike a big metal heat sink where the temperature for the chips in the middle is higher than the rest, the heat of each EncapLED chip gets dissipated evenly. This innovative heat dissipation design keeps the junction temperature low and ultimately prolongs the life of the LED chips. Our modules are covered by our standard 5 year warranty and are available in any of our fixtures designs, as well as in a simple retro-fit kit form for existing fixtures of any brand.

**Options:** 2, 3 or 4 scrolls. Scrolls can be in either convex position as shown, or concave position. ( inverted)

Fixture available with or without finial.

Please specify



Normandy shown with 4 convex scrolls