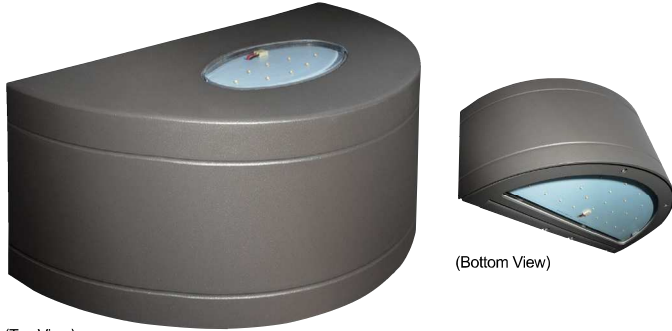


# WP36Q

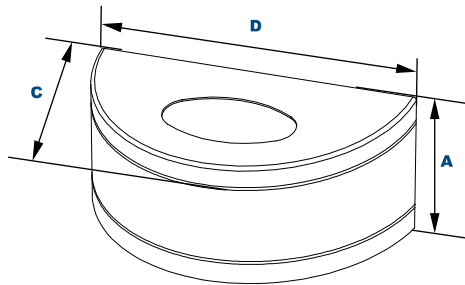
**EasyLED Crescent Wall Sconce Up/Down Light**

**L70**  
25°C **410,000 Hours**



(Top View)

(Bottom View)



### Dimensions

<b>Width (D)</b>	18 1/8" (460mm)
<b>Depth (C)</b>	7 1/8" (181mm)
<b>Height (A)</b>	9 1/8" (232mm)

### Order Information Example:

**WP36QF1X46U5KZSP**

WP36Q	F	1X46				
Model	Optics	Wattage	Driver	CCT	Color	Options
<b>WP36Q</b> =EasyLED Crescent Wall Sconce Up/Down	<b>F</b> =Type V	<b>1X46</b> =Up 1x12w, Down 1x34	<b>U</b> =120-277V <b>C</b> =347V	<b>4K</b> =4000K <b>5K</b> =5000K	<b>Z</b> =Bronze <b>C</b> =Custom (Consult Factory)	<b>SF</b> =Single Fuse <b>DF</b> =Double Fuse <b>SP</b> =Surge Protection <b>BU</b> =Battery Backup, 90 Minutes

The Bieber WP36Q up and down architectural wall luminaire is available with an IES Type V distribution designed to replace HID lighting systems from 150w to 250w MH or HPS. Typical wall mounted lighting applications include retail centers, industrial parks, schools and universities, public transit and airports, office buildings and medical facilities. Mounting heights of 12 to 20 feet can be used based on light level and uniformity requirements.

### Specifications and Features:

#### Housing:

Die Cast Gasketed Aluminum Front Frame and Housing. Nickel-Plated Stainless Steel Hardware.

#### Finish:

Textured Architectural Bronze Powdercoat Finish Over a Chromate Conversion Coating. Custom Colors Available Upon Request.

#### Lens:

Bottom: Tempered Clear Flat Glass Lens,  
Top: Oval Molded Tempered Clear Glass Lens.

#### Mounting Options:

Mount Directly Over a 4" Recessed Outlet Box, Includes Easy-Hang "Two Hands Free" Wall Mounting Bracket with Built-In Level

#### EasyLED LED:

Aluminum Boards

#### Wattage:

Array: 12w and 34w, System: 52w  
(250w HID Equivalent)

#### Driver:

Electronic Driver, 120-277V, 50/60Hz; 347V, 50/60Hz; Dimmable Driver

#### Listing & Ratings:

CSA: Listed for Wet Locations.  
Operating Temperatures: -40°C to +40°C  
IP65

See Page 2 for Projected Lumen Maintenance Table.

5-Year Warranty.

### Project Information:

Project Name:  Fixture Type:

Complete Catalog #:  Date:

Comments:

### Certification & Listings:



Specifications subject to change without notice. Rev. 071917

### Accessories & Replacement Parts:

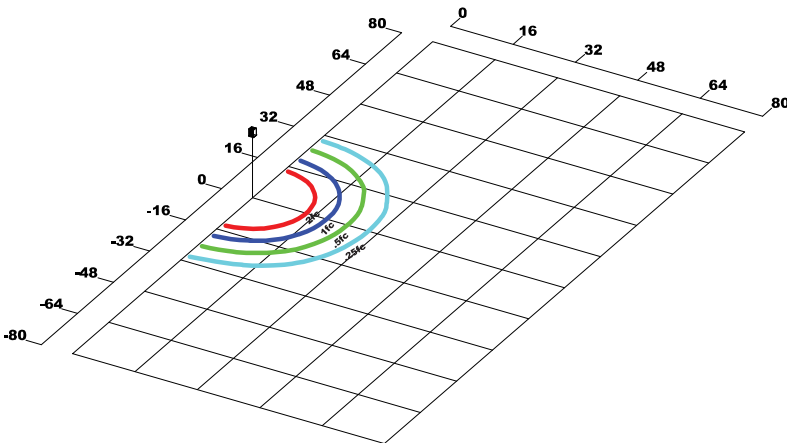


3EBL1202774500

#### Replacement Parts (Order separately, Field installed)

3EBL1202774500 Battery Backup, Provides 90 Minutes of Backup Power.

### Photometric Data



WP36QF1X46U5KC  
Type V

Grid in MH  
MH=16 Feet

### Photometric Performance

LED Board Watts	Drive Current (mA)	Input Watts	Optics	5000 CCT 80 CRI					4000 CCT 80 CRI				
				Lumens	LPW	B	U	G	Lumens	LPW	B	U	G
EasyLED 46w	525	52	Type V	5,922	114	2	5	1	5,419	104	2	5	0

### Projected Lumen Maintenance

Data shown for 5000 CCT			Compare to MH				
TM-21-11	Input Watts	Initial	25,000 Hrs	50,000 Hrs	100,000 Hrs	Calculated L70@ 25°C	
L70 Lumen Maintenance @ 25°C / 77°F	52	1.00	0.98	0.96	0.93	410,000	
TM-21-11	Input Watts	Initial	25,000 Hrs	50,000 Hrs	100,000 Hrs	Calculated L70@ 50°C	
L70 Lumen Maintenance @ 50°C / 122°F	52	1.00	0.97	0.94	0.87	235,000	
TM-21-11	Input Watts	Initial	25,000 Hrs	50,000 Hrs	100,000 Hrs	Calculated L80@ 40°C	
L80 Lumen Maintenance @ 40°C / 104°F	52	1.00	0.97	0.95	0.89	187,000	

**NOTES:**

1. Projected per IESNA TM-21-11. Data references the extrapolated performance projections for the 525mA base model in a 25°C ambient, based on 10,000 hours of LED testing per IESNA LM-80-08.
2. Compare to MH box indicates suggested Light Loss Factor (LLF) to be used when comparing to Metal Halide (MH) systems.